

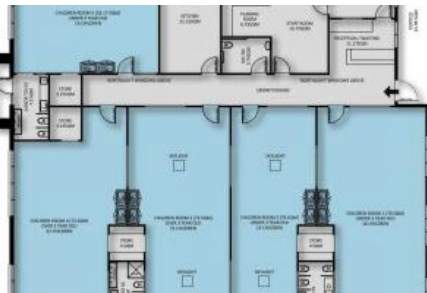


VIEW FROM POWLETT STREET

94 Powlett St, Kilmore



VIEW FROM ALLEN STREET AT PROPOSED



VIEW OF PLAY AREA ON SOUTHERN SIDE

Permit Approved 90 Places Childcare Centre for Lease in Kilmore

90 planning permit approved places

Land size – 1777 sqm

Highly visible location on the Corner of Powlett Street and Allan Street.

Positioned within 900m of the 3 schools with a combined total of more than 2,300 students between them.

Construction ready to commence soon.

Single level Building. All children's rooms and staff amenities are on ground level.

A premium location surrounded by subdivisions, estimated to be more than 17 residential estates either proposed or under construction in Kilmore for an approx. total of 2,000+ new lots.

Kilmore is in the Mitchell Shire, the fastest growing municipality in Victoria where growth is exceeding expectations and is forecasted to have more than 181,000 residents in the next 20 years.

This site is within the Kilmore-Broadford Childcare catchment where there are 1,121 children in the target market age group of 0-5 years.

Architectural design with generous staff areas, 5 spacious playrooms, ample storage, and 20 on-site parking spots

🏠 20 📐 1,777 m2

Price	EOI
Property Type	Commercial
Property ID	271
Land Area	1,777 m2
Office Area	355 m2

Agent Details

Gabrielle Zhang - 0433297367

Office Details

Mercury Business Sales and Valuation
0433297367



Land area 1,777m² | Ground Floor Area 656m²

Contact Gabrielle Zhang today for more information.

**** ONLY BUYERS WITH A CURRENT PROVIDER APPROVAL WILL BE
CONSIDERED ****

The above information provided has been furnished to us by the vendor/s. We have not verified whether or not that information is accurate and do not have any belief in one way or the other in its accuracy. We do not accept any responsibility to any person for its accuracy and do no more than pass it on. All interested parties should make and rely upon their own inquiries in order to determine whether or not this information is in fact accurate.